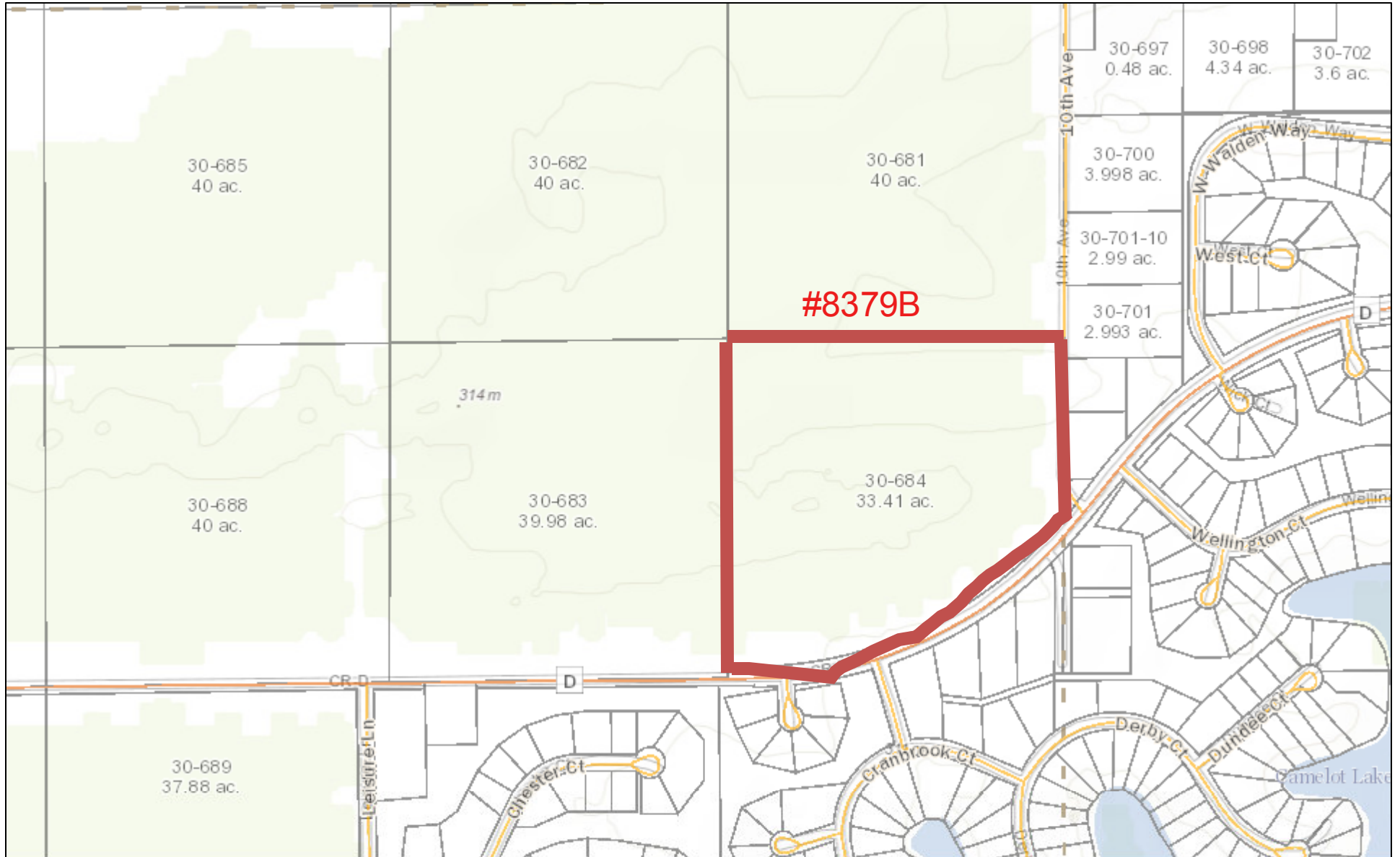


#8279B



October 7, 2016

Adams Co. 1:9,028
 0 0.075 0.15 0.3 mi
 0 0.1 0.2 0.4 km

- | | | | |
|----------------|--------------------|----------------|-------------------|
| State Highway | County Boundary | Hospital | Intermittent |
| County Highway | Municipal Boundary | Parcel Lines | Perennial |
| Local Road | Sections | Streams | Open Water |
| Railroad | Schools | Fluctuating | Open Water |

DISCLAIMER: This map is for informational purposes and has not been prepared for, nor is it suitable for legal, surveying, or engineering purposes. Users of this information should review or consult the primary data and information sources to ascertain the usability of the information. Adams County makes no warranty or ascertain the usability of the information. Adams County makes no warranty or guarantee as to the content, accuracy, timeliness, or completeness of any of the data provided, and assumes no legal responsibility for the information contained hereon. Copyright 2015, Adams County. All rights reserved.

Sources: Esri, HERE, DeLorme, Intermap, increment P Corp., GEBCO, USGS, FAO, NPS, NRCAN, GeoBase, IGN, Kadaster NL, Ordnance Survey, Esri Japan, METI, Esri China (Hong Kong), swisstopo, MapmyIndia, © OpenStreetMap contributors, and the GIS User Community